

***Making Disciples who make Jesus known***

## HEADLINE NEWS!

Join us for a  
**Valentine's  
Day  
Cèilidh**

**Saturday 14th February  
7:00pm - 9:30pm  
St John's Church, Bilton  
No Dance Experience Required  
BYO Refreshments**

Tickets on the door: £5 | Under 18s free

The next **COFFEE MORNING** is on Saturday 14th February in St John's Church Hall, 10am - 12noon. Entrance £1 includes tea/coffee and biscuits (accompanied children free) and there will be the usual stalls: hand-made cards ~



COFFEE  
MORNING

cakes ~  
jigsaws ~  
books ~  
tombola ~  
raffle ~  
plus

refreshments.

Leave any donations for the raffle/tombola in the boxes at church, cakes to be brought on the morning.

All proceeds this month will be for **MONDAY FIRST**, the monthly fresh expression run by Val and John Carr and the team from St John's & St Luke's at Dene Park Community Centre.

## TODAY'S SERVICES AND EVENTS

**SUNDAY 1ST FEBRUARY** (*Fourth Sunday of Epiphany/Candlemas*)

9.00am Holy Communion (SJ)

10.30am **JOINT** All Age Parade Service (**SJ**)

*Readings: 1 Corinthians 1:18-end; John 2:1-11*

*Hymns: SB 87; SB 28; SB 42; Holy Forever*

1.00pm Baptisms (SJ)

4-6.00pm Volunteer's Thank You Event & Laura's Farewell (SL)

6-7.30pm Youth Worship Night at Wesley Chapel

# CHURCH LIFE

A **LENT GROUP** will be running for 6 weeks starting on Thursday 19th February, 12-1.00pm at St Luke's and everyone is invited to join. If you are interested you can pick up one of the accompanying books; 'Dancing to the heartbeat of God', the Archbishop of Canterbury's Lent book for 2026, from the parish office for a donation to the youth appeal.



We are revising our **WHO'S WHO** parish directory in 2026. If you would like to be included please fill in one of the 'consent forms' available at both churches and tick the relevant box and hand to a churchwarden or leave in the office. You do not have to have all your information published, just let us know but it is also used as a prayer diary and we would love to pray for you

and your family each month. If you have previously completed a form there is no need to do a new one, your entry will be included again.

February's **FOCUS MAGAZINE** is available to buy from both churches for 60p.

The **Copy Date** for March's issue is Sunday 15th February.

Articles can be left in the drawer at the back of St John's or emailed to [sjslfocus@gmail.com](mailto:sjslfocus@gmail.com)

**MONDAY FIRST** Join us at Dene Park Community Centre, 2-3.00pm on Monday 2nd February for music, worship, learning and cake and a cuppa. Everyone is welcome.

## Our next **BAPTISM INFORMATION SESSION**

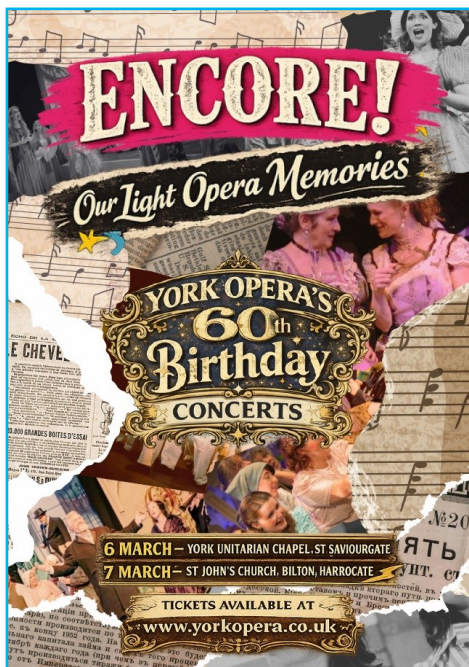
is on Monday 2nd March, 7.30pm at St John's.

If you are thinking about having your child baptised at St John's or St Luke's you are welcome to join our list of attendees for this session. Please get in touch with the parish office to find out more and to book your place.




On the 1st March **HANNAH COLE** will be running the Anglesey Half Marathon in aid of Ogwen Valley Mountain Rescue, during her time at Bangor University enjoying the mountains has been one of the most peaceful pastimes she has encountered and she has also witnessed first hand how hard the mountain rescue team works.

Although she is fundraising for this her main ask from the church is for prayers not just for the half marathon but for all the volunteers of the mountain rescue teams. If anyone would like to donate to this cause the best people to speak to are Louise Cole or Bethany Bacon who will be able to point you in the right direction and answer any questions.



## SUPPORTING MINISTRY & MISSION

### Raise funds for us for FREE

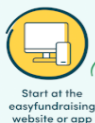
with  **easyfundraising**



Join as our supporter today at:  
[www.easyfundraising.org.uk/support-a-good-cause](http://www.easyfundraising.org.uk/support-a-good-cause)  
Just search for:

Bilton St John

8,000+ retailers will donate to us whenever you shop with them



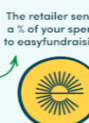
Start at the easyfundraising website or app



Click out to where you'd like to shop



Checkout: prices are exactly the same!



The retailer sends a % of your spend to easyfundraising



They pass it on to us :)

Plus, you'll get...



Exclusive retailer offers



Competitions



A warm feeling inside!

Over  
**£60m**  
raised for UK good causes

**£0**  
extra cost to anyone



### PARISH GIVING SCHEME

We love welcoming everyone into our churches, whether it's to mark an important time in someone's life, to worship regularly, or to come together in the heart of the community.

If you'd like to support your local church, perhaps you'd consider making a gift? You can make a

regular or one-off gift simply and safely online, through the **PARISH GIVING SCHEME**, scan the QR code to find out more.



# THIS WEEK'S DIARY

## MONDAY 2 FEBRUARY

9-9.30am Morning Prayer (SJ)  
2-3.00pm Monday First at Dene Park  
Community Centre

## TUESDAY 3 FEBRUARY

9-9.30am Morning Prayer (SJ)

## WEDNESDAY 4 FEBRUARY

9-9.30am Morning Prayer (SJ)  
10.30am Holy Communion (SJ)  
10.30am Thirst Coffee Morning at  
Dene Park Community  
Centre

## THURSDAY 5 FEBRUARY

9-9.30am Morning Prayer (SJ)  
9.30-11.30am Little Fishes (Parent &  
Child Group) (SL)

## FRIDAY 6 FEBRUARY

1-3.00pm Wellbeing Café (SL)

6.30-7.15pm Junior Choir Practice  
(SJ)

7-7.45pm Adult Choir Practice (SJ)

## SUNDAY 8 FEBRUARY *(Second Sunday before Lent)*

9.00am Holy Communion (SJ)

10.30am Holy Communion (SJ)

*Readings: Romans 8:18-25*

*Matthew 6:25-end*

10.30am Café Church (SL)

*Hymns: SB 35; SB 102; SB 196;*

*My Lighthouse*

6-7.15pm Ignite (Year 7+ Youth  
Group) (SL)

## URGENT VOLUNTEERS NEEDED!

Could you help once a month with **REFRESHMENTS** after the 10.30am service at St John's? We are looking for new volunteers to help our team on a rota or we may have to stop serving them every week (!) and we all look forward to a tea/coffee, biscuits and a chat after the services. If you can help please speak to one of the lovely team on a Sunday morning or get in touch with the office. Full instructions will be given. **ALSO** help needed to clean St John's, 1 hour per month on a rota with a well-established team. Please contact the office for more details. Thank you.

## CONTACT US

### SAFEGUARDING

For any queries or concerns, contact

**Gill Clarke (Parish Safeguarding Officer)**

[safeguarding.sjsl@outlook.com](mailto:safeguarding.sjsl@outlook.com) Tel: 07837 186435 / 01423 565129

### THE MINISTRY TEAM

**Matthew Hunter (Team Rector)**

Tel: 07394 239772 / 787575

[matthew.hunter@leeds.anglican.org](mailto:matthew.hunter@leeds.anglican.org)

**Laura Martin (Team Vicar)**

Tel: 07497 865507

[laura.martin@leeds.anglican.org](mailto:laura.martin@leeds.anglican.org)

**Judith Clark (Children & Young People's Chaplain)**

[youthwork@stjohnsandstlukes.org.uk](mailto:youthwork@stjohnsandstlukes.org.uk)

**Office:** Tel: 01423 565129 **Email:** [church@stjohnsandstlukes.org.uk](mailto:church@stjohnsandstlukes.org.uk)  
**Websites:** [www.stjohnsandstlukes.org.uk](http://www.stjohnsandstlukes.org.uk) [www.stlukesharrogate.org.uk](http://www.stlukesharrogate.org.uk)